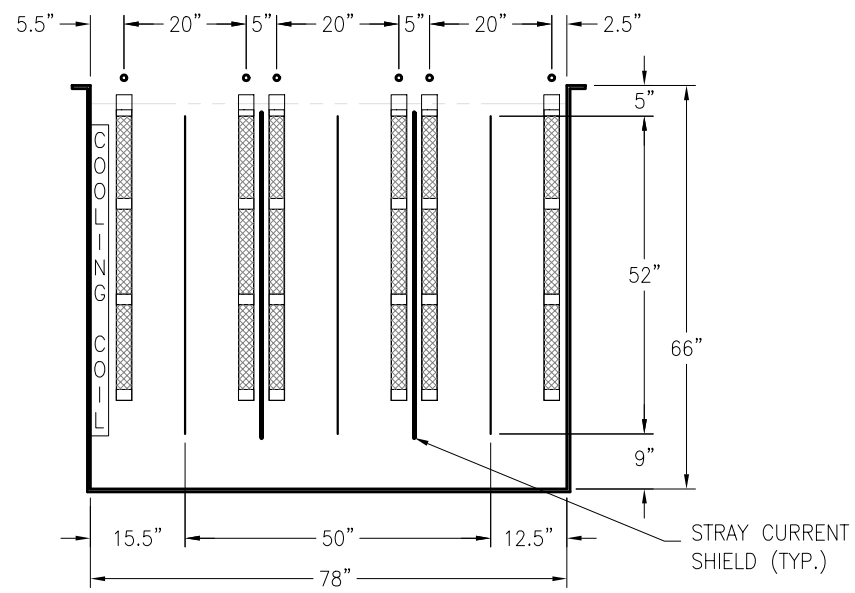
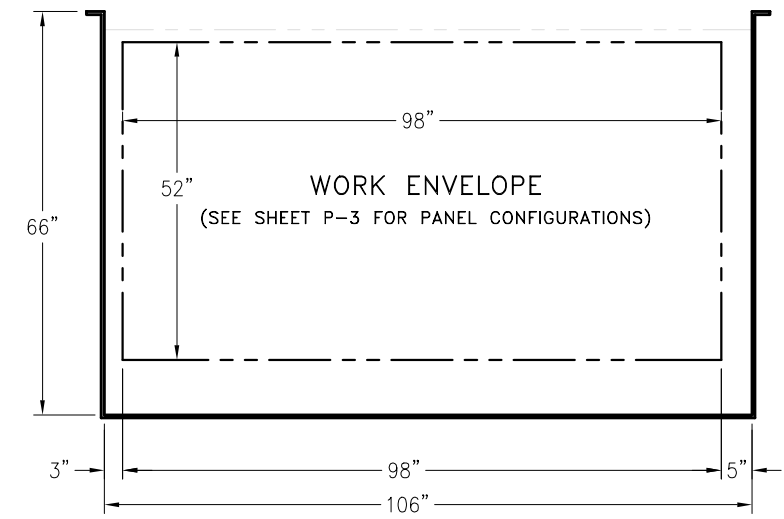


SIDE ELEVATION
STATION NO. 10



SIDE ELEVATION
STATION NO. 17-19



END ELEVATION
ALL STATIONS

PROJECT: AUTOMATED COPPER/TIN/SOLDER PATTERN PLATING
SYSTEM PLAN & TANK ELEVATIONS

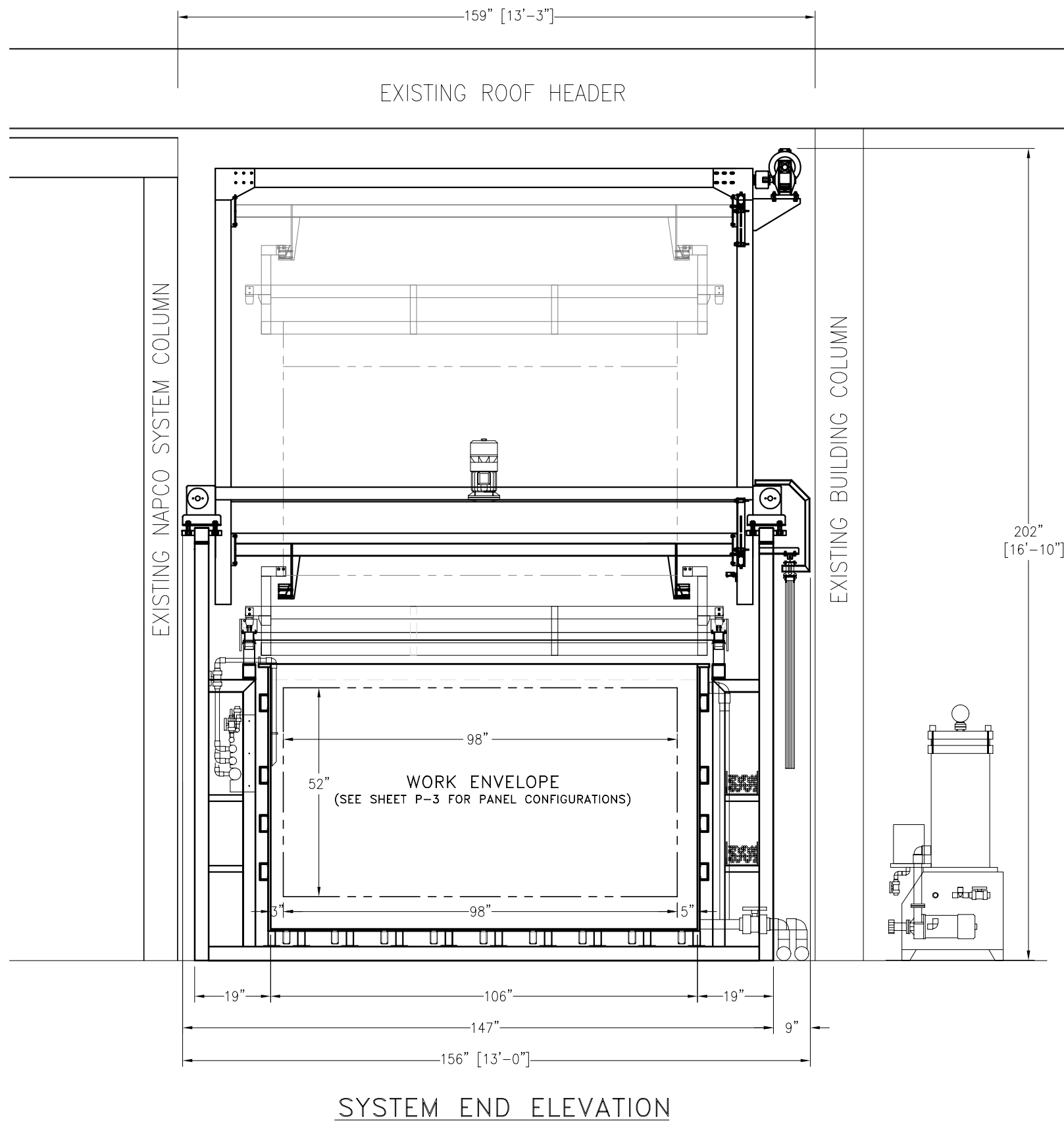
PROPOSAL NUMBER: P-1
DRAWING NUMBER: P-1

BAKER TECHNOLOGY ASSOCIATES INC.
710 WILSHIRE BLVD. SUITE 610
SANTA MONICA, CALIFORNIA 90401

BAKER TECHNOLOGY ASSOCIATES INC.
BAKER


C.A.D. FILE No.:
REV. SHEET 1 OF 3

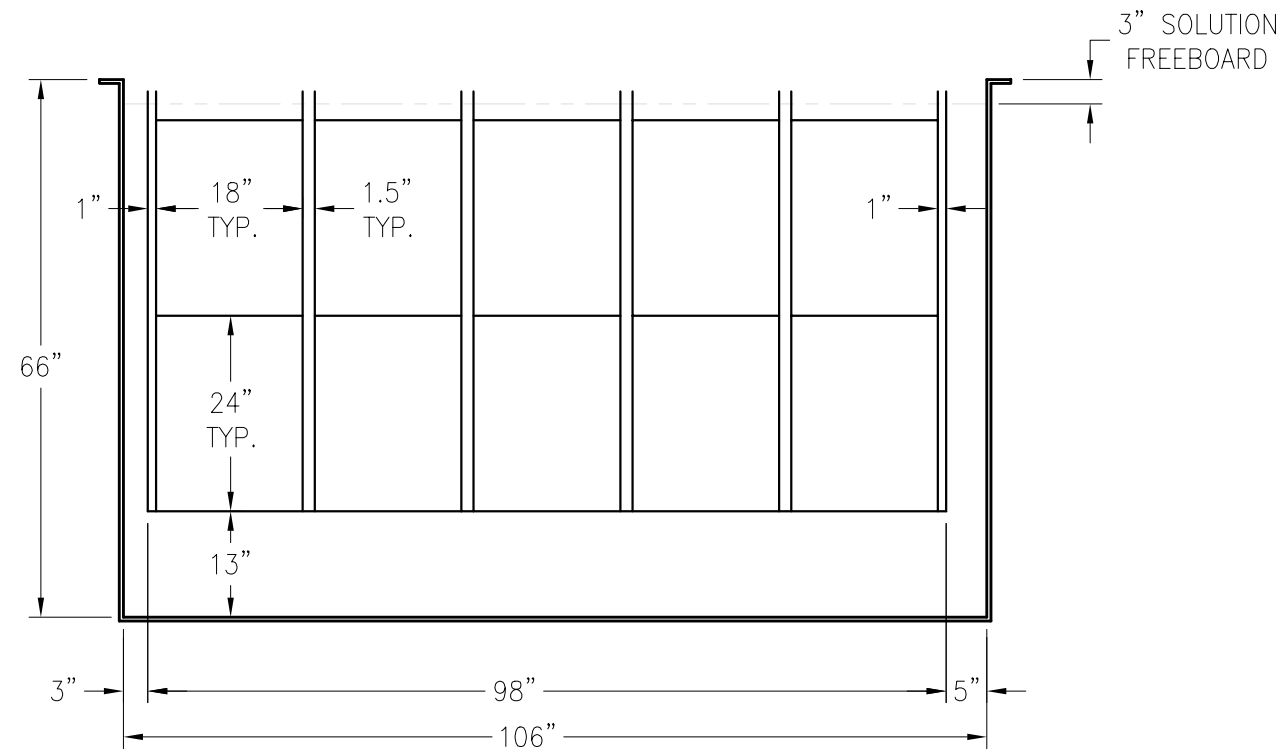
PREPARED FOR:
DRAWN BY: J. SPINELLA
DATE:
SCALE: NONE
CHECKED BY:
APPROVED BY:
DATE:



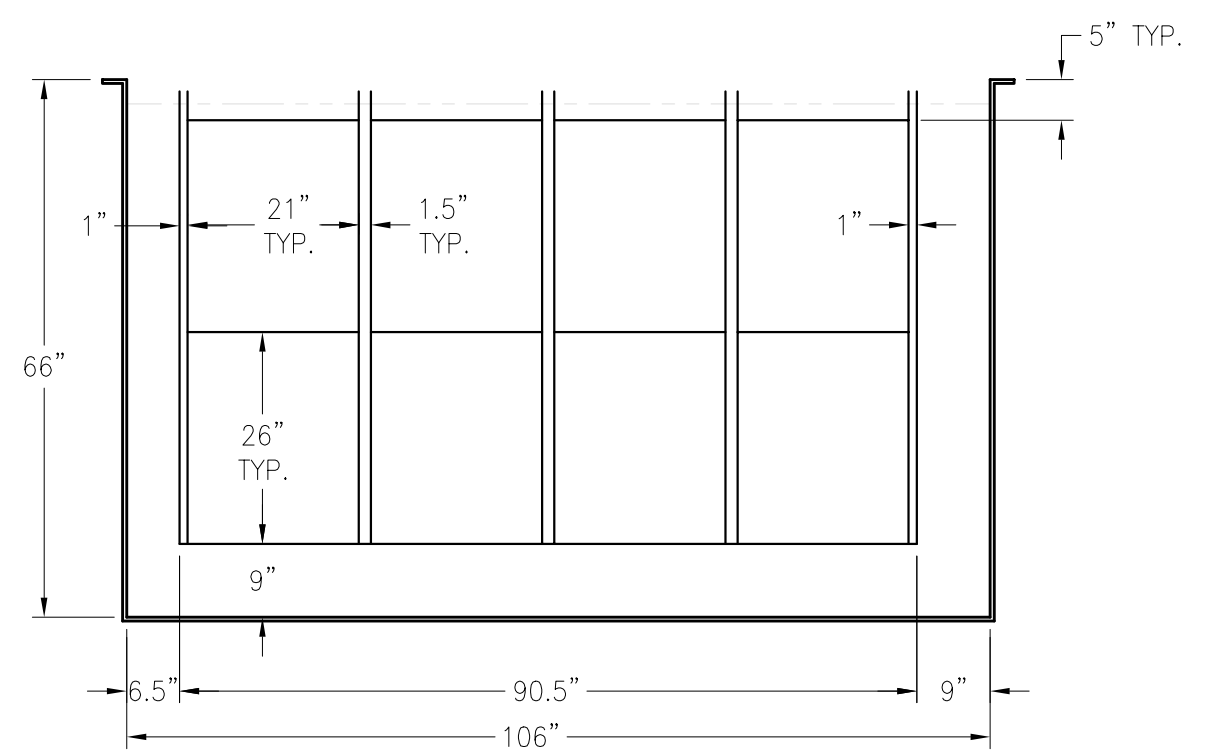
NOTES:

1. TWO (2) BTA MODEL SL-1000 TOP RAIL SUPPORTED TRANSPORTERS, FABRICATED OF TYPE 304 STAINLESS STEEL. TRANSPORTER TO RIDE UPON PARALLEL RUNNING RAILS, ONE ON EACH SIDE OF THE TANKLINE SYSTEM, WITH SUPPORT STRUCTURE INTEGRAL TO THE TANK BASE.
2. TRANSPORTER LOCATION TO BE GOVERNED BY INFRARED POSITIONING SYSTEM.
3. TRANSPORTER MOTION AND PROCESS SYSTEM FUNCTIONS TO BE MONITORED AND CONTROLLED BY THE BTA-AUCOS MIXED ALGORITHM CONTROL SYSTEM.
4. HEATING CHARACTERISTICS: TANKS TO BE ELECTRICALLY HEATED BY ELECTRIC IMMERSION HEATERS, WITH SIZING BASED UPON A SIX (6) HOUR HEAT-UP TIME FROM AN AMBIENT TEMPERATURE OF 65° F.
5. ELECTRICAL CHARACTERISTICS: 480V/3 ϕ /60Hz
6. TYPICAL PROCESS SEQUENCES:
 PATTERN PLATE: 1-11 ALT. 12-13-14-13 or 15-16-COPPER PLATE-15-(10-TIN PLATE) or (4-SOLDER PLATE)-6-1.
 RACK STRIP: 1-3-2-1.
7. PRODUCTION CAPABILITIES: THE SYSTEM IS DESIGNED TO PRODUCE APPROXIMATELY (10.6) LOADS PER HOUR, WITH EACH LOAD TO CONSIST OF SIX (6) EACH 30"x24" PANELS, FOR A TOTAL PRODUCTION RATE OF APPROXIMATELY SIXTY-FOUR (64) PANELS PER HOUR.
8. ALL NOTES ARE SUBJECT TO CUSTOMER REVIEW OF THE FINAL SYSTEM CONFIGURATION AND PROCESS CYCLE VERIFICATION.

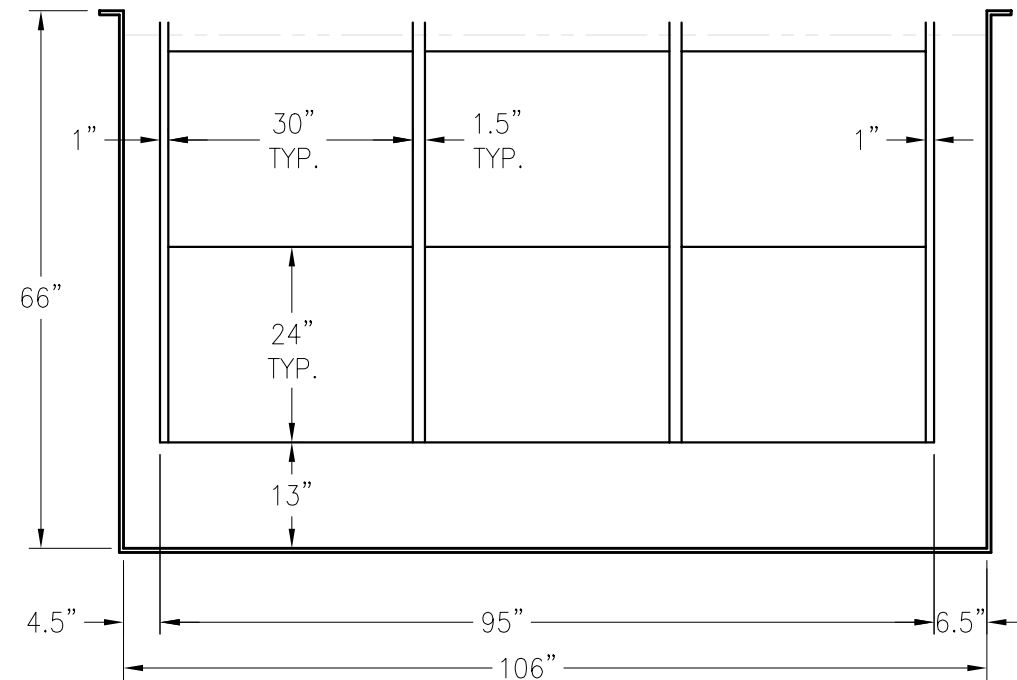
		BAKER TECHNOLOGY ASSOCIATES INC. 710 WILSHIRE BLVD. SUITE 610 SANTA MONICA, CALIFORNIA 90401	
PROPOSAL NUMBER:	C.A.D. FILE No.:	DRAWN BY:	DATE:
		J. SPINELLA	
DRAWING NUMBER:	SCALE:	CHECKED BY:	APPROVED BY:
P-2	NONE		
REV.	SHEET	PROJECT:	
	2 of 3	AUTOMATED COPPER/TIN/ SOLDER PATTERN PLATING SYSTEM END ELEVATION & NOTES	



END ELEVATION
(10) 18"x24" PANEL CONFIGURATION



END ELEVATION
(8) 21"x26" PANEL CONFIGURATION



END ELEVATION
(6) 30"x24" PANEL CONFIGURATION

PROJECT:		AUTOMATED COPPER/TIN/ SOLDER PATTERN PLATING	
DATE:		TANK ELEVATIONS	
APPROVED BY:	CHECKED BY:	SCALE:	NONE
DRAWN BY:	J. SPINELLA	DATE:	
PREPARED FOR:		C.A.D. FILE No.:	
PROPOSAL NUMBER:		REV.	SHEET
DRAWING NUMBER:	P-3		3 OF 3
BAKER TECHNOLOGY ASSOCIATES INC. 710 WILSHIRE BLVD. SUITE 610 SANTA MONICA, CALIFORNIA 90401			

