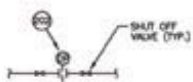


NOTE: (10) PIPE DIAMETERS OF STRAIGHT PIPE LENGTH IS NEEDED BOTH UPSTREAM & DOWNSTREAM OF ITEM '300' WITHOUT ANY FITTINGS OR VALVES IN THESE LENGTHS.

DI WATER DIFFERENTIAL PRESSURE TRANSMITTER

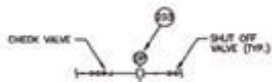
M/S



NOTE: (10) PIPE DIAMETERS OF STRAIGHT PIPE LENGTH IS NEEDED BOTH UPSTREAM & DOWNSTREAM OF ITEM '300' WITHOUT ANY FITTINGS OR VALVES IN THESE LENGTHS.

COMPRESSED AIR DIFFERENTIAL PRESSURE TRANSMITTER

M/S



NOTE: (10) PIPE DIAMETERS OF STRAIGHT PIPE LENGTH IS NEEDED BOTH UPSTREAM & DOWNSTREAM OF ITEM '300' WITHOUT ANY FITTINGS OR VALVES IN THESE LENGTHS.

CHILLED WATER DIFFERENTIAL PRESSURE TRANSMITTER

M/S

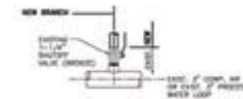
EQUIPMENT PROVIDED BY OTHERS *

ITEM	QTY.	DESCRIPTION
101	1	CHIEF ULTRASONIC CORPORATION DUAL-USE ULTRASONIC SEMI-AQUEOUS CLEANING SYSTEM, REDUCES WASH & RINSE TANKS, HOT AIR DRYING, CATALYTIC, ELECTRICAL, CONTROL, BOIL, LOAD & UNLOAD CARTS, TRANSFER UNIT, BLOWER EXHAUST, PLUMP UP, EQUALIZER, DEMONSTRATION AND SPARE PANS.

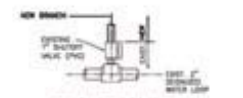
NOTE: THIS EQUIPMENT IS PROVIDED & INSTALLED BY CHIEF ULTRASONIC CORPORATION, TRENTON, NEW JERSEY.

MECHANICAL CONTRACT EQUIPMENT LIST *

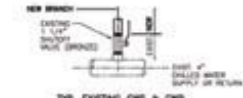
ITEM	QTY.	DESCRIPTION
200	1	ROSEMOUNT 30510G4ASD1A4M4S, GAUGE PRESSURE TRANSMITTER, 1/2" NPT, CALIBRATION 0-300 PSIG
201	1	ROSEMOUNT 30510C-4-A-2-2-A-1-A-84-M5, DIFFERENTIAL PRESSURE TRANSMITTER, MANIFOLD 1151-150-3, AND 5/8" ORIFICE PLATE FOR 1" SCH 80 PVC DEIONIZED WATER SERVICE (50 PSIG, 4 TO 10 GPM) WITH 1" 150 LB. FLANGED UNIONS OF SCH. 80 PVC, TAG AS '07-1101'
202	1	ROSEMOUNT 30510C-4-A-2-2-A-1-A-84-M5, DIFFERENTIAL PRESSURE TRANSMITTER, MANIFOLD 1151-150-3, AND 5/8" ORIFICE PLATE FOR 1" SCH 80 PVC COMPRESSED AIR SERVICE (100 PSIG, 50 TO 100 CFM) WITH 1" 150 LB. FLANGED UNIONS OF CARBON STEEL, TAG AS '07-1103'
203	1	ROSEMOUNT 30510C-4-A-2-2-A-1-A-84-M5, DIFFERENTIAL PRESSURE TRANSMITTER, MANIFOLD 1151-150-3, AND 5/8" ORIFICE PLATE FOR 1" TYPE 1" COPPER PIPING CHILLED WATER SERVICE (8 PSIG, 10 TO 10 GPM) WITH 1" 150 LB. FLANGED UNIONS OF SCH. 80 PVC, TAG AS '07-1104'
204	1	REDUCED PRESSURE BACKFLOW PREVENTER, 3/4", BRONZE, WITH BALL VALVES AND STRAINER, CONCORO 42-214-A2
205	1	UPWARD TRUE CHECK BALL CHECK VALVE, 1" CVPC/VITON, THREADED TYPE
206	2	NORCON DESIGNER SERIES 88 REGULATOR, 1/2", 5 TO 150 PSIG, NEW PRESSURE GAUGE, NORCON 808-405-804M
207	2	BRIDGELOX 77E QUICK-CONNECT, 3/4" SS-GT8-B-120F
208	2	SPEEDARE SLEEVE TYPE COUPLER, MALE COUPLER, 1/2", URANDER 80418
209	2	BRIDGELOX 77E QUICK-CONNECT, 3/4" SS-GT8-B-1210
210	2	BRIDGELOX 77E QUICK-CONNECT, 3/4" SS-GT8-B-1210
211	1	EMULO GAL. & PART NO. 1350V (WITHOUT COMPRESSOR MOUNTING DECK), VERTICAL AIR RECEIVER, 200 WORKING PSIG, 24" DIA. DETAIL THIS SHEET.
212	100'	PW INDUSTRIES #08-6008-012-12, UNDER TRAY - 12" WIDE ALUMINUM WITH BLINDS 4" O. C. PROVIDE ALL FLOOR FLANGES, FLUXE PLATES, BDM CLAMPS, BOLTS, ETC. AS REQUIRED FOR COMPLETE MOUNTING.
213	1	INGERSOLL-RAND AUTOMATIC DRAIN VALVE (ADV), ELECTRONIC TIMER, SOLENOID VALVE DESIGN, 1/2" NPT INLET AND OUTLET.
214	1	U.S. GAUGE NO. P500 1/4" LM, DIA. SIZE 2 1/2", 0-200 PSIG RANGE
215	1	KNOXON ASME RATED FIG. 1180 1" NPT SAFETY VALVE, SET PRESSURE OF 150 PSIG



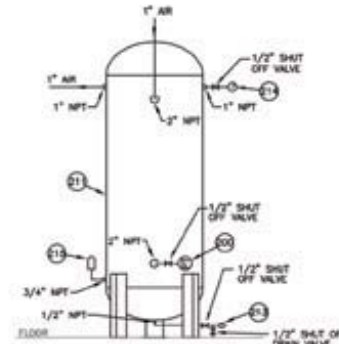
TYP. EXISTING COMPRESSED AIR BRANCH OR PROCESS WATER BRANCH CONNECTION



TYP. EXISTING DEIONIZED WATER BRANCH CONNECTION

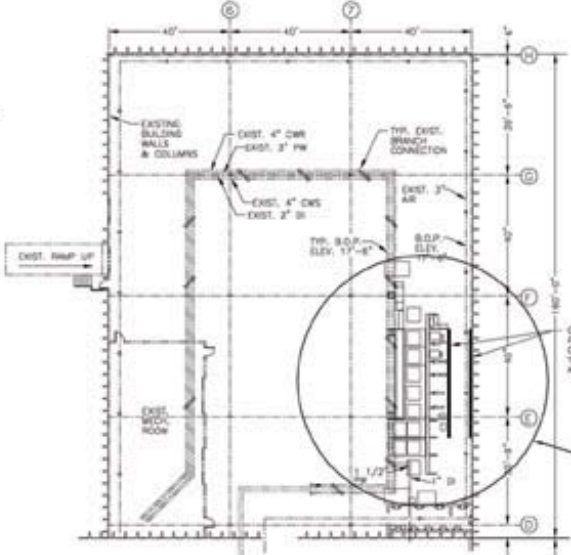


TYP. EXISTING CHILLED WATER SUPPLY OR RETURN BRANCH CONNECTION



AIR RECEIVER DETAIL

M/S



ETF FACILITY CLEANING AREA

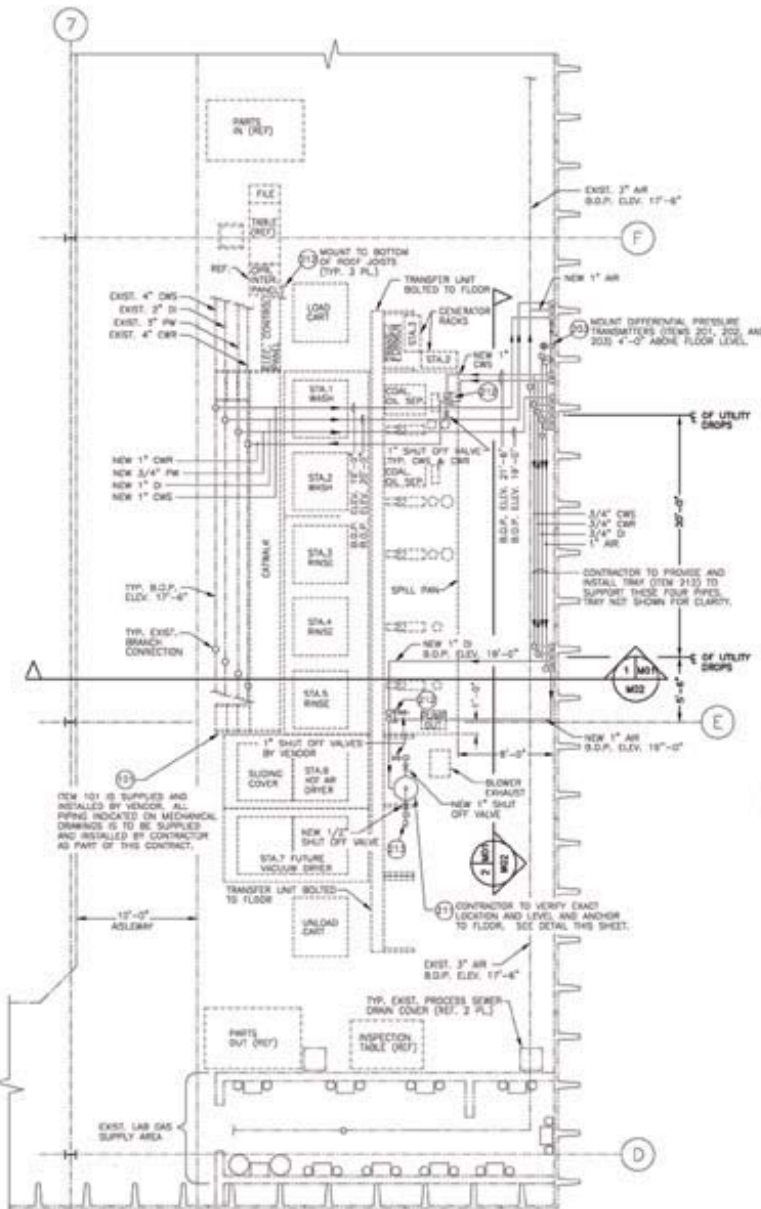
SCALE 1/16"=1'-0"

- MATERIAL SPECIFICATIONS:**
- 1) CHILLED WATER SUPPLY & RETURN PIPING - PROVIDE TYPE 1" COPPER TUBING WITH SWEAT TYPE FITTINGS. VALVES TO BE BRONZE BALL VALVES (SOCKET TYPE).
 - 2) COMPRESSED AIR PIPING - PROVIDE TYPE 1" COPPER TUBING WITH SWEAT TYPE FITTINGS. VALVES TO BE BRONZE BALL VALVES (SOCKET TYPE).
 - 3) DEIONIZED WATER PIPING - PROVIDE SCHEDULE 80 PVC PIPING WITH SOCKET TYPE FITTINGS. VALVES TO BE PVC BALL VALVES (SOCKET TYPE).
 - 4) COMPRESSED AIR - PROVIDE SCHEDULE 40 BLACK STEEL PIPE WITH MALLEABLE IRON SCREW FITTINGS. VALVES TO BE BRONZE BALL VALVES (SOCKET TYPE).
 - 5) DEK DEIONIZATION ARRANGING TO BE PER THIS DRAWING.
 - 6) ISOLATE ALL CHILLED WATER SUPPLY, CHILLED WATER RETURN, PROCESS WATER & DEIONIZED WATER PIPING PER CONTRACT SPECIFICATIONS.

PIPE LEGEND/PIPE IDENTIFICATION MARKERS *			
PIPE SYMBOL	SERVICE DESCRIPTION	MARKER LEISND	MARKER COLOR
AR	COMPRESSED AIR	COMPRESSED AIR	BLUE
DI	DIIONIZED WATER	DIIONIZED WATER	GREEN
PW	PROCESS WATER	POTABLE WATER	GREEN
CWS	CHILLED WATER SUPPLY	CHILLED WATER SUPPLY	GREEN
CWR	CHILLED WATER RETURN	CHILLED WATER RETURN	GREEN

* NOTE: PIPE IDENTIFICATION MARKERS TO BE LAB SAFETY SUPPLY STYLE B (1 1/8" X 8", PPS PIPE TO 2 1/2" DIA.) OR EQUIVALENT.

EQUIPMENT LEGEND	
---	INDICATES EQUIPMENT PROVIDED AND INSTALLED BY VENDOR
---	INDICATES EQUIPMENT PROVIDED AND INSTALLED BY ETC
---	INDICATES EQUIPMENT PROVIDED AND INSTALLED BY CONTRACTOR
---	INDICATES EXISTING



DUAL-USE ULTRASONIC SEMI-AQUEOUS LAYOUT

SCALE 1/4"=1'-0"